

---

**Note:** For the benefit of the students, specially the aspiring ones, the question of JEE(Main), 2014 are also given in this booklet. Keeping the interest of students studying in class XI, the questions based on topics from class XI have been marked with ‘\*’, which can be attempted as a test.

---

# FIITJEE Solutions to JEE(MAIN)-2014

PAPER – 1 : PHYSICS, MATHEMATICS & CHEMISTRY

Test Booklet Code

**H**

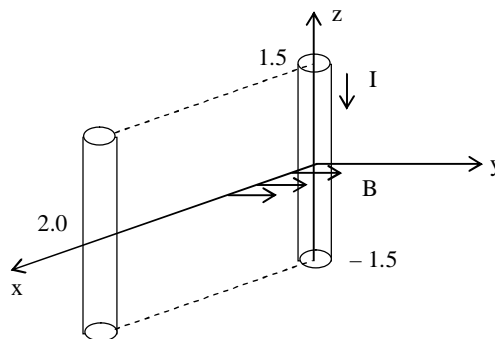
**Important Instructions:**

3. The test is of **3 hours duration**.
4. The Test Booklet consists of **90** questions. The maximum marks are **360**.
5. There are **three** parts in the question paper A, B, C consisting of **Physics, Mathematics and Chemistry** having 30 questions in each part of equal weightage. Each question is allotted **4 (four)** marks for correct response.
6. *Candidates will be awarded marks as stated above in instruction No. 5 for correct response of each question. (1/4) (one fourth) marks will be deducted for indicating incorrect response of each question. No deduction from the total score will be made if no response is indicated for an item in the answer sheet.*
7. There is only one correct response for each question. Filling up more than one response in each question will be treated as wrong response and marks for wrong response will be deducted accordingly as per instruction 6 above.

**PART A – PHYSICS**

- \*1. The pressure that has to be applied to the ends of a steel wire of length 10 cm to keep its length constant when its temperature is raised by  $100^\circ\text{C}$  is :  
 (For steel Young's modulus is  $2 \times 10^{11} \text{ N m}^{-2}$  and coefficient of thermal expansion is  $1.1 \times 10^{-5} \text{ K}^{-1}$ )  
 (1)  $2.2 \times 10^7 \text{ Pa}$  (2)  $2.2 \times 10^6 \text{ Pa}$   
 (3)  $2.2 \times 10^8 \text{ Pa}$  (4)  $2.2 \times 10^9 \text{ Pa}$

2. A conductor lies along the z-axis at  $-1.5 \leq z < 1.5 \text{ m}$  and carries a fixed current of 10.0 A in  $-\hat{a}_z$  direction (see figure). For a field  $\vec{B} = 3.0 \times 10^{-4} e^{-0.2x} \hat{a}_y \text{ T}$ , find the power required to move the conductor at constant speed to  $x = 2.0 \text{ m}$ ,  $y = 0 \text{ m}$  in  $5 \times 10^{-3} \text{ s}$ . Assume parallel motion along the x-axis  
 (1) 14.85 W (2) 29.7 W  
 (3) 1.57 W (4) 2.97 W



- \*3. A bob of mass  $m$  attached to an inextensible string of length  $\ell$  is suspended from a vertical support. The bob rotates in a horizontal circle with an angular speed  $\omega$  rad/s about the vertical. About the point of suspension :  
 (1) angular momentum changes in direction but not in magnitude.  
 (2) angular momentum changes both in direction and magnitude.  
 (3) angular momentum is conserved.  
 (4) angular momentum changes in magnitude but not in direction.

4. The current voltage relation of diode is given by  $I = (e^{1000V/T} - 1) \text{ mA}$ , where the applied voltage  $V$  is in volts and the temperature  $T$  is in degree Kelvin. If a student makes an error measuring  $\pm 0.01 \text{ V}$  while measuring the current of 5 mA at 300 K, what will be the error in the value of current in mA ?  
 (1) 0.5 mA (2) 0.05 mA  
 (3) 0.2 mA (4) 0.02 mA

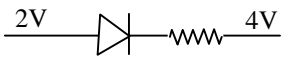
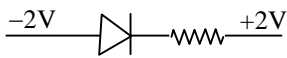
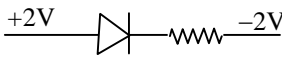
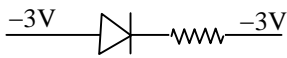
- \*5. An open glass tube is immersed in mercury in such a way that a length of 8 cm extends above the mercury level. The open end of the tube is then closed and sealed and the tube is raised vertically up by additional 46 cm. What will be length of the air column above mercury in the tube now? (Atmospheric pressure = 76 cm of Hg)  
 (1) 38 cm (2) 6 cm  
 (3) 16 cm (4) 22 cm

6. Match **List-I** (Electromagnetic wave type) with **List-II** (Its association / application) and select the correct option from the choices given below the lists:

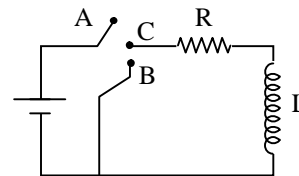
**List – I**

**List – II**

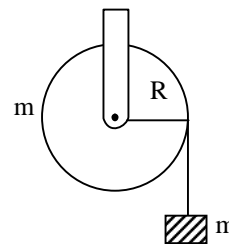
- |                      |  |
|----------------------|--|
| (a) Infrared waves   | (i) To treat muscular strain                       |
| (b) Radio waves      | (ii) For broadcasting                              |
| (c) X-rays           | (iii) To detect fracture of bones                  |
| (d) Ultraviolet rays | (iv) Absorbed by the ozone layer of the atmosphere |
- 
- |           |       |       |       |
|-----------|-------|-------|-------|
| (a)       | (b)   | (c)   | (d)   |
| (1) (iii) | (ii)  | (i)   | (iv)  |
| (2) (i)   | (ii)  | (iii) | (iv)  |
| (3) (iv)  | (iii) | (ii)  | (i)   |
| (4) (i)   | (ii)  | (iv)  | (iii) |

7. A parallel plate capacitor is made of two circular plates separated by a distance of 5 mm and with a dielectric of dielectric constant 2.2 between them. When the electric field in the dielectric is  $3 \times 10^4$  V/m, the charge density of the positive plate will be close to :
- (1)  $3 \times 10^4$  C/m<sup>2</sup>                                      (2)  $6 \times 10^4$  C/m<sup>2</sup>  
(3)  $6 \times 10^{-7}$  C/m<sup>2</sup>                                      (4)  $3 \times 10^{-7}$  C/m<sup>2</sup>
8. A student measured the length of a rod and wrote it as 3.50 cm. Which instrument did he use to measure it?
- (1) A screw gauge having 100 divisions in the circular scale and pitch as 1 mm.  
(2) A screw gauge having 50 divisions in the circular scale and pitch as 1 mm.  
(3) A meter scale.  
(4) A vernier calliper where the 10 divisions in vernier scale matches with 9 division in main scale and main scale has 10 divisions in 1 cm.
- \*9. Four particles, each of mass M and equidistant from each other, move along a circle of radius R under the action of their mutual gravitational attraction. The speed of each particle is :
- (1)  $\sqrt{\frac{GM}{R}(1+2\sqrt{2})}$                                       (2)  $\frac{1}{2}\sqrt{\frac{GM}{R}(1+2\sqrt{2})}$   
(3)  $\sqrt{\frac{GM}{R}}$     (4)  $\sqrt{2\sqrt{2}\frac{GM}{R}}$
10. In a large building, there are 15 bulbs of 40 W, 5 bulbs of 100 W, 5 fans of 80 W and 1 heater of 1kW. The voltage of the electric mains is 220 V. The minimum capacity of the main fuse of the building will be :
- (1) 12 A    (2) 14 A  
(3) 8 A    (4) 10 A
- \*11. A particle moves with simple harmonic motion in a straight line. In first  $\tau$  s, after starting from rest it travels a distance a, and in next  $\tau$  s it travels 2a, in same direction, then :
- (1) amplitude of motion is 4a                                      (2) time period of oscillations is  $6\tau$   
(3) amplitude of motion is 3a                                      (4) time period of oscillations is  $8\tau$
12. The coercivity of a small magnet where the ferromagnet gets demagnetized is  $3 \times 10^3$  Am<sup>-1</sup>. The current required to be passed in a solenoid of length 10 cm and number of turns 100, so that the magnet gets demagnetized when inside the solenoid, is:
- (1) 3A    (2) 6A  
(3) 30 mA    (4) 60 mA
13. The forward biased diode connection is:
- (1)                                       (2) 
- (3)                                       (4) 
14. During the propagation of electromagnetic waves in a medium:
- (1) Electric energy density is equal to the magnetic energy density.  
(2) Both electric and magnetic energy densities are zero.  
(3) Electric energy density is double of the magnetic energy density.  
(4) Electric energy density is half of the magnetic energy density.

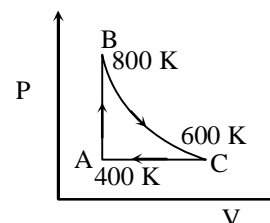
15. In the circuit shown here, the point 'C' is kept connected to point 'A' till the current flowing through the circuit becomes constant. Afterward, suddenly, point 'C' is disconnected from point 'A' and connected to point 'B' at time  $t = 0$ . Ratio of the voltage across resistance and the inductor at  $t = L/R$  will be equal to :



- (1)  $-1$  (2)  $\frac{1-e}{e}$   
 (3)  $\frac{e}{1-e}$  (4)  $1$
- \*16. A mass 'm' is supported by a massless string wound around a uniform hollow cylinder of mass m and radius R. If the string does not slip on the cylinder, with what acceleration will the mass fall on release?



- (1)  $\frac{5g}{6}$  (2)  $g$   
 (3)  $\frac{2g}{3}$  (4)  $\frac{g}{2}$
- \*17. One mole of diatomic ideal gas undergoes a cyclic process ABC as shown in figure. The process BC is adiabatic. The temperatures at A, B and C are 400 K, 800 K and 600 K respectively. Choose the correct statement:



- (1) The change in internal energy in the process AB is  $-350 R$ .  
 (2) The change in internal energy in the process BC is  $-500 R$ .  
 (3) The change in internal energy in whole cyclic process is  $250 R$ .  
 (4) The change in internal energy in the process CA is  $700 R$ .
- \*18. From a tower of height H, a particle is thrown vertically upwards with a speed u. The time taken by the particle, to hit the ground, is n times that taken by it to reach the highest point of its path. The relation between H, u and n is:

- (1)  $2gH = nu^2(n-2)$  (2)  $gH = (n-2)u^2$   
 (3)  $2gH = n^2u^2$  (4)  $gH = (n-2)^2u^2$
19. A thin convex lens made from crown glass ( $\mu = \frac{3}{2}$ ) has focal length f. When it is measured in two different liquids having refractive indices  $\frac{4}{3}$  and  $\frac{5}{3}$ , it has the focal lengths  $f_1$  and  $f_2$  respectively. The correct relation between the focal lengths is:

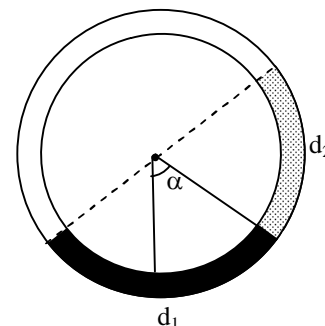
- (1)  $f_2 > f$  and  $f_1$  becomes negative (2)  $f_1$  and  $f_2$  both become negative  
 (3)  $f_1 = f_2 < f$  (4)  $f_1 > f$  and  $f_2$  becomes negative
- \*20. Three rods of Copper, Brass and Steel are welded together to form a Y-shaped structure. Area of cross-section of each rod =  $4 \text{ cm}^2$ . End of copper rod is maintained at  $100^\circ\text{C}$  whereas ends of brass and steel are kept at  $0^\circ\text{C}$ . Lengths of the copper, brass and steel rods are 46, 13 and 12 cms respectively. The rods are thermally insulated from surroundings except at ends. Thermal conductivities of copper, brass and steel are 0.92, 0.26 and 0.12 CGS units respectively. Rate of heat flow through copper rod is :

- (1) 4.8 cal/s (2) 6.0 cal/s  
 (3) 1.2 cal/s (4) 2.4 cal/s

- \*21. A pipe of length 85 cm is closed from one end. Find the number of possible natural oscillations of air column in the pipe whose frequencies lie below 1250 Hz. The velocity of sound in air is 340 m/s.  
 (1) 6 (2) 4  
 (3) 12 (4) 8

- \*22. There is a circular tube in a vertical plane. Two liquids which do not mix and of densities  $d_1$  and  $d_2$  are filled in the tube. Each liquid subtends  $90^\circ$  angle at centre. Radius joining their interface makes an angle  $\alpha$  with vertical. ratio  $d_1/d_2$  is

- (1)  $\frac{1 + \tan \alpha}{1 - \tan \alpha}$  (B)  $\frac{1 + \sin \alpha}{1 - \cos \alpha}$   
 (3)  $\frac{1 + \sin \alpha}{1 - \sin \alpha}$  (D)  $\frac{1 + \cos \alpha}{1 - \cos \alpha}$



23. A green light is incident from the water to the air – water interface at the critical angle ( $\theta$ ). Select the correct statement  
 (1) The spectrum of visible light whose frequency is more than that of green light will come out to the air medium.  
 (2) The entire spectrum of visible light will come out of the water at various angles to the normal.  
 (3) The entire spectrum of visible light will come out of the water at an angle of  $90^\circ$  to the normal.  
 (4) The spectrum of visible light whose frequency is less than that of green light will come out to the air medium.

24. Hydrogen ( ${}_1\text{H}^1$ ), Deuterium ( ${}_1\text{H}^2$ ), singly ionised Helium ( ${}_2\text{He}^4$ )<sup>+</sup> and doubly ionised lithium ( ${}_3\text{Li}^6$ )<sup>++</sup> all have one electron around the nucleus. Consider an electron transition from  $n = 2$  to  $n = 1$ . If the wave lengths of emitted radiation are  $\lambda_1, \lambda_2, \lambda_3$  and  $\lambda_4$  respectively then approximately which one of the following is correct?  
 (1)  $\lambda_1 = \lambda_2 = 4\lambda_3 = 9\lambda_4$  (2)  $\lambda_1 = 2\lambda_2 = 3\lambda_3 = 4\lambda_4$   
 (3)  $4\lambda_1 = 2\lambda_2 = 2\lambda_3 = \lambda_4$  (4)  $\lambda_1 = 2\lambda_2 = 2\lambda_3 = \lambda_4$

25. The radiation corresponding to  $3 \rightarrow 2$  transition of hydrogen atom falls on a metal surface to produce photoelectrons. These electrons are made to enter a magnetic field of  $3 \times 10^{-4}\text{T}$ . If the radius of the largest circular path followed by these electrons is 10.0 mm, the work function of the metal is close to :  
 (1) 0.8 eV (2) 1.6 eV  
 (3) 1.8 eV (4) 1.1 eV

- \*26. A block of mass  $m$  is placed on a surface with a vertical cross section given by  $y = x^3/6$ . If the coefficient of friction is 0.5, the maximum height above the ground at which the block can be placed without slipping is :  
 (1)  $\frac{1}{3}m$  (2)  $\frac{1}{2}m$   
 (3)  $\frac{1}{6}m$  (4)  $\frac{2}{3}m$

- \*27. When a rubber-band is stretched by a distance  $x$ , it exerts a restoring force of magnitude  $F = ax + bx^2$  where  $a$  and  $b$  are constants. The work done in stretching the unstretched rubber band by  $L$  is :  
 (1)  $\frac{aL^2}{2} + \frac{bL^3}{3}$  (2)  $\frac{1}{2} \left( \frac{aL^2}{2} + \frac{bL^3}{3} \right)$   
 (3)  $aL^2 + bL^3$  (4)  $\frac{1}{2} (aL^2 + bL^3)$

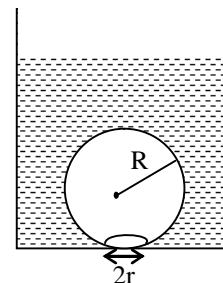
- \*28. On heating water, bubbles being formed at the bottom of the vessel detach and rise. Take the bubbles to be spheres of radius  $R$  and making a circular contact of radius  $r$  with the bottom of the vessel. If  $r < R$ , and the surface tension of water is  $T$ , value of  $r$  just before bubbles detach is : (density of water is  $\rho_w$ )

(1)  $R^2 \sqrt{\frac{\rho_w g}{T}}$

(2)  $R^2 \sqrt{\frac{3\rho_w g}{T}}$

(3)  $R^2 \sqrt{\frac{\rho_w g}{3T}}$

(4)  $R^2 \sqrt{\frac{\rho_w g}{6T}}$



29. Two beams, A and B, of plane polarized light with mutually perpendicular planes of polarization are seen through a polaroid. From the position when the beam A has maximum intensity (and beam B has zero intensity), a rotation of Polaroid through  $30^\circ$  makes the two beams appear equally bright. If the initial intensities of the two beams are  $I_A$  and  $I_B$  respectively, then  $I_A/I_B$  equals :

(1) 1

(2)  $1/3$

(3) 3

(4)  $3/2$

30. Assume that an electric field  $\vec{E} = 30x^2 \hat{i}$  exists in space. Then the potential difference  $V_A - V_O$ , where  $V_O$  is the potential at the origin and  $V_A$  the potential at  $x = 2$  m is :

(1)  $-80$  J

(2) 80 J

(3) 120 J

(4)  $-120$  J

## PART B – MATHEMATICS

31. The image of the line  $\frac{x-1}{3} = \frac{y-3}{1} = \frac{z-4}{-5}$  in the plane  $2x - y + z + 3 = 0$  is the line
- (1)  $\frac{x+3}{3} = \frac{y-5}{1} = \frac{z-2}{-5}$  (2)  $\frac{x+3}{-3} = \frac{y-5}{-1} = \frac{z+2}{5}$   
 (3)  $\frac{x-3}{3} = \frac{y+5}{1} = \frac{z-2}{-5}$  (4)  $\frac{x-3}{-3} = \frac{y+5}{-1} = \frac{z-2}{5}$
- \*32. If the coefficients of  $x^3$  and  $x^4$  in the expansion of  $(1 + ax + bx^2)(1 - 2x)^{18}$  in powers of  $x$  are both zero, then  $(a, b)$  is equal to
- (1)  $\left(16, \frac{251}{3}\right)$  (2)  $\left(14, \frac{251}{3}\right)$   
 (3)  $\left(14, \frac{272}{3}\right)$  (4)  $\left(16, \frac{272}{3}\right)$
33. If  $a \in \mathbb{R}$  and the equation  $-3(x - [x])^2 + 2(x - [x]) + a^2 = 0$  (where  $[x]$  denotes the greatest integer  $\leq x$ ) has no integral solution, then all possible values of  $a$  lie in the interval
- (1)  $(-1, 0) \cup (0, 1)$  (2)  $(1, 2)$   
 (3)  $(-2, -1)$  (4)  $(-\infty, -2) \cup (2, \infty)$
34. If  $[\vec{a} \times \vec{b} \quad \vec{b} \times \vec{c} \quad \vec{c} \times \vec{a}] = \lambda [\vec{a} \quad \vec{b} \quad \vec{c}]^2$ , then  $\lambda$  is equal to
- (1) 2 (2) 3  
 (3) 0 (4) 1
35. The variance of first 50 even natural numbers is
- (1)  $\frac{833}{4}$  (2) 833  
 (3) 437 (4)  $\frac{437}{4}$
- \*36. A bird is sitting on the top of a vertical pole 20 m high and its elevation from a point O on the ground is  $45^\circ$ . It flies off horizontally straight away from the point O. After one second, the elevation of the bird from O is reduced to  $30^\circ$ . Then the speed (in m/s) of the bird is
- (1)  $40(\sqrt{2} - 1)$  (2)  $40(\sqrt{3} - \sqrt{2})$   
 (3)  $20\sqrt{2}$  (4)  $20(\sqrt{3} - 1)$
37. The integral  $\int_0^\pi \sqrt{1 + 4\sin^2 \frac{x}{2} - 4\sin \frac{x}{2}} dx$  equals
- (1)  $\pi - 4$  (2)  $\frac{2\pi}{3} - 4 - 4\sqrt{3}$   
 (3)  $4\sqrt{3} - 4$  (4)  $4\sqrt{3} - 4 - \frac{\pi}{3}$
- \*38. The statement  $\sim(p \leftrightarrow \sim q)$  is
- (1) equivalent to  $p \leftrightarrow q$  (2) equivalent to  $\sim p \leftrightarrow q$   
 (3) a tautology (4) a fallacy

39. If A is an  $3 \times 3$  non-singular matrix such that  $AA' = A'A$  and  $B = A^{-1}A'$ , then  $BB'$  equals  
 (1)  $I + B$  (2)  $I$   
 (3)  $B^{-1}$  (4)  $(B^{-1})'$
40. The integral  $\int \left(1 + x - \frac{1}{x}\right) e^{x + \frac{1}{x}} dx$  is equal to  
 (1)  $(x-1)e^{x + \frac{1}{x}} + c$  (2)  $x e^{x + \frac{1}{x}} + c$   
 (3)  $(x+1)e^{x + \frac{1}{x}} + c$  (4)  $-x e^{x + \frac{1}{x}} + c$
- \*41. If z is a complex number such that  $|z| \geq 2$ , then the minimum value of  $\left|z + \frac{1}{2}\right|$   
 (1) is equal to  $\frac{5}{2}$  (2) lies in the interval (1, 2)  
 (3) is strictly greater than  $\frac{5}{2}$  (4) is strictly greater than  $\frac{3}{2}$  but less than  $\frac{5}{2}$
42. If g is the inverse of a function f and  $f'(x) = \frac{1}{1+x^5}$ , then  $g'(x)$  is equal to  
 (1)  $1+x^5$  (2)  $5x^4$   
 (3)  $\frac{1}{1+\{g(x)\}^5}$  (4)  $1+\{g(x)\}^5$
43. If  $\alpha, \beta \neq 0$ , and  $f(n) = \alpha^n + \beta^n$  and  $\begin{vmatrix} 3 & 1+f(1) & 1+f(2) \\ 1+f(1) & 1+f(2) & 1+f(3) \\ 1+f(2) & 1+f(3) & 1+f(4) \end{vmatrix} = K(1-\alpha)^2(1-\beta)^2(\alpha-\beta)^2$ , then K is equal to  
 (1)  $\alpha\beta$  (2)  $\frac{1}{\alpha\beta}$   
 (3) 1 (4) -1
44. Let  $f_k(x) = \frac{1}{k}(\sin^k x + \cos^k x)$  where  $x \in \mathbb{R}$  and  $k \geq 1$ . Then  $f_4(x) - f_6(x)$  equals  
 (1)  $\frac{1}{6}$  (2)  $\frac{1}{3}$   
 (3)  $\frac{1}{4}$  (4)  $\frac{1}{12}$
- \*45. Let  $\alpha$  and  $\beta$  be the roots of equation  $px^2 + qx + r = 0$ ,  $p \neq 0$ . If  $p, q, r$  are in A.P. and  $\frac{1}{\alpha} + \frac{1}{\beta} = 4$ , then the value of  $|\alpha - \beta|$  is  
 (1)  $\frac{\sqrt{61}}{9}$  (2)  $\frac{2\sqrt{17}}{9}$   
 (3)  $\frac{\sqrt{34}}{9}$  (4)  $\frac{2\sqrt{13}}{9}$



46. Let A and B be two events such that  $P(\overline{A \cup B}) = \frac{1}{6}$ ,  $P(A \cap B) = \frac{1}{4}$  and  $P(\overline{A}) = \frac{1}{4}$ , where  $\overline{A}$  stands for the complement of the event A. Then the events A and B are  
 (1) mutually exclusive and independent (2) equally likely but not independent  
 (3) independent but not equally likely (4) independent and equally likely
47. If  $f$  and  $g$  are differentiable functions in  $[0, 1]$  satisfying  $f(0) = 2 = g(1)$ ,  $g(0) = 0$  and  $f(1) = 6$ , then for some  $c \in ]0, 1[$   
 (1)  $2f'(c) = g'(c)$  (2)  $2f'(c) = 3g'(c)$   
 (3)  $f'(c) = g'(c)$  (4)  $f'(c) = 2g'(c)$
48. Let the population of rabbits surviving at a time  $t$  be governed by the differential equation  $\frac{dp(t)}{dt} = \frac{1}{2}p(t) - 200$ . If  $p(0) = 100$ , then  $p(t)$  equals  
 (1)  $400 - 300e^{t/2}$  (2)  $300 - 200e^{-t/2}$   
 (3)  $600 - 500e^{t/2}$  (4)  $400 - 300e^{-t/2}$
- \*49. Let C be the circle with centre at (1, 1) and radius = 1. If T is the circle centred at (0, y), passing through origin and touching the circle C externally, then the radius of T is equal to  
 (1)  $\frac{\sqrt{3}}{\sqrt{2}}$  (2)  $\frac{\sqrt{3}}{2}$   
 (3)  $\frac{1}{2}$  (4)  $\frac{1}{4}$
50. The area of the region described by  $A = \{(x, y) : x^2 + y^2 \leq 1 \text{ and } y^2 \leq 1 - x\}$  is  
 (1)  $\frac{\pi}{2} + \frac{4}{3}$  (2)  $\frac{\pi}{2} - \frac{4}{3}$   
 (3)  $\frac{\pi}{2} - \frac{2}{3}$  (4)  $\frac{\pi}{2} + \frac{2}{3}$
- \*51. Let  $a, b, c$  and  $d$  be non-zero numbers. If the point of intersection of the lines  $4ax + 2ay + c = 0$  and  $5bx + 2by + d = 0$  lies in the fourth quadrant and is equidistant from the two axes then  
 (1)  $2bc - 3ad = 0$  (2)  $2bc + 3ad = 0$   
 (3)  $3bc - 2ad = 0$  (4)  $3bc + 2ad = 0$
- \*52. Let PS be the median of the triangle with vertices P(2, 2), Q(6, -1) and R(7, 3). The equation of the line passing through (1, -1) and parallel to PS is  
 (1)  $4x - 7y - 11 = 0$  (2)  $2x + 9y + 7 = 0$   
 (3)  $4x + 7y + 3 = 0$  (4)  $2x - 9y - 11 = 0$
53.  $\lim_{x \rightarrow 0} \frac{\sin(\pi \cos^2 x)}{x^2}$  is equal to  
 (1)  $\frac{\pi}{2}$  (2) 1  
 (3)  $-\pi$  (4)  $\pi$
- \*54. If  $X = \{4^n - 3n - 1 : n \in \mathbb{N}\}$  and  $Y = \{9(n - 1) : n \in \mathbb{N}\}$ , where  $\mathbb{N}$  is the set of natural numbers, then  $X \cup Y$  is equal to  
 (1)  $\mathbb{N}$  (2)  $Y - X$   
 (3)  $X$  (4)  $Y$

- \*55. The locus of the foot of perpendicular drawn from the centre of the ellipse  $x^2 + 3y^2 = 6$  on any tangent to it is
- (1)  $(x^2 - y^2)^2 = 6x^2 + 2y^2$  (2)  $(x^2 - y^2)^2 = 6x^2 - 2y^2$   
 (3)  $(x^2 + y^2)^2 = 6x^2 + 2y^2$  (4)  $(x^2 + y^2)^2 = 6x^2 - 2y^2$
- \*56. Three positive numbers from an increasing G.P. If the middle term in this G.P. is doubled, the new numbers are in A.P. Then the common ratio of the G.P. is
- (1)  $\sqrt{2} + \sqrt{3}$  (2)  $3 + \sqrt{2}$   
 (3)  $2 - \sqrt{3}$  (4)  $2 + \sqrt{3}$
- \*57. If  $(10)^9 + 2(11)^1 (10)^8 + 3(11)^2 (10)^7 + \dots + 10(11)^9 = k(10)^9$ , then  $k$  is equal to
- (1)  $\frac{121}{10}$  (2)  $\frac{441}{100}$   
 (3) 100 (4) 110
58. The angle between the lines whose direction cosines satisfy the equations  $l + m + n = 0$  and  $l^2 = m^2 + n^2$  is
- (1)  $\frac{\pi}{3}$  (2)  $\frac{\pi}{4}$   
 (3)  $\frac{\pi}{6}$  (4)  $\frac{\pi}{2}$
- \*59. The slope of the line touching both the parabolas  $y^2 = 4x$  and  $x^2 = -32y$  is
- (1)  $\frac{1}{2}$  (2)  $\frac{3}{2}$   
 (3)  $\frac{1}{8}$  (4)  $\frac{2}{3}$
60. If  $x = -1$  and  $x = 2$  are extreme points of  $f(x) = \alpha \log |x| + \beta x^2 + x$ , then
- (1)  $\alpha = -6, \beta = \frac{1}{2}$  (2)  $\alpha = -6, \beta = -\frac{1}{2}$   
 (3)  $\alpha = 2, \beta = -\frac{1}{2}$  (4)  $\alpha = 2, \beta = \frac{1}{2}$

## PART C – CHEMISTRY

61. Which one of the following properties is **not** shown by NO?
- (1) It combines with oxygen to form nitrogen dioxide
  - (2) It's bond order is 2.5
  - (3) It is diamagnetic in gaseous state
  - (4) It is a neutral oxide
- \*62. If  $Z$  is a compressibility factor, van der Waals equation at low pressure can be written as:
- (1)  $Z = 1 - \frac{Pb}{RT}$
  - (2)  $Z = 1 + \frac{Pb}{RT}$
  - (3)  $Z = 1 + \frac{RT}{Pb}$
  - (4)  $Z = 1 - \frac{a}{VRT}$
63. The metal that cannot be obtained by electrolysis of an aqueous solution of its salts is:
- (1) Cu
  - (2) Cr
  - (3) Ag
  - (4) Ca
64. Resistance of 0.2 M solution of an electrolyte is 50  $\Omega$ . The specific conductance of the solution is 1.4  $S\ m^{-1}$ . The resistance of 0.5 M solution of the same electrolyte is 280  $\Omega$ . The molar conductivity of 0.5 M solution of the electrolyte in  $S\ m^2\ mol^{-1}$  is:
- (1)  $5 \times 10^3$
  - (2)  $5 \times 10^2$
  - (3)  $5 \times 10^{-4}$
  - (4)  $5 \times 10^{-3}$
65. CsCl crystallises in body centred cubic lattice. If 'a' is its edge length then which of the following expressions is correct?
- (1)  $r_{Cs^+} + r_{Cl^-} = \frac{\sqrt{3}}{2}a$
  - (2)  $r_{Cs^+} + r_{Cl^-} = \sqrt{3}a$
  - (3)  $r_{Cs^+} + r_{Cl^-} = 3a$
  - (4)  $r_{Cs^+} + r_{Cl^-} = \frac{3a}{2}$
66. Consider separate solutions of 0.500 M  $C_2H_5OH(aq)$ , 0.100 M  $Mg_3(PO_4)_2(aq)$ , 0.250 M  $KBr(aq)$  and 0.125 M  $Na_3PO_4(aq)$  at 25°C. Which statement is **true** about these solutions, assuming all salts to be strong electrolytes?
- (1) 0.125 M  $Na_3PO_4(aq)$  has the highest osmotic pressure.
  - (2) 0.500 M  $C_2H_5OH(aq)$  has the highest osmotic pressure.
  - (3) They all have the same osmotic pressure.
  - (4) 0.100 M  $Mg_3(PO_4)_2(aq)$  has the highest osmotic pressure.
- \*67. In which of the following reactions  $H_2O_2$  acts as a reducing agent?
- (a)  $H_2O_2 + 2H^+ + 2e^- \longrightarrow 2H_2O$
  - (b)  $H_2O_2 - 2e^- \longrightarrow O_2 + 2H^+$
  - (c)  $H_2O_2 + 2e^- \longrightarrow 2OH^-$
  - (d)  $H_2O_2 + 2OH^- - 2e^- \longrightarrow O_2 + 2H_2O$
- (1) (a), (c)
  - (2) (b), (d)
  - (3) (a), (b)
  - (4) (c), (d)
68. In  $S_N2$  reactions, the correct order of reactivity for the following compounds:  $CH_3Cl$ ,  $CH_3CH_2Cl$ ,  $(CH_3)_2CHCl$  and  $(CH_3)_3CCl$  is:
- (1)  $CH_3CH_2Cl > CH_3Cl > (CH_3)_2CHCl > (CH_3)_3CCl$
  - (2)  $(CH_3)_2CHCl > CH_3CH_2Cl > CH_3Cl > (CH_3)_3CCl$
  - (3)  $CH_3Cl > (CH_3)_2CHCl > CH_3CH_2Cl > (CH_3)_3CCl$
  - (4)  $CH_3Cl > CH_3CH_2Cl > (CH_3)_2CHCl > (CH_3)_3CCl$

69. The octahedral complex of a metal ion  $M^{3+}$  with four monodentate ligands  $L_1, L_2, L_3$  and  $L_4$  absorb wavelengths in the region of red, green, yellow and blue, respectively. The increasing order of ligand strength of the four ligands is:

- (1)  $L_3 < L_2 < L_4 < L_1$  (2)  $L_1 < L_2 < L_4 < L_3$   
 (3)  $L_4 < L_3 < L_2 < L_1$  (4)  $L_1 < L_3 < L_2 < L_4$

\*70. For the estimation of nitrogen, 1.4 g of organic compound was digested by Kjeldahl method and the evolved ammonia was absorbed in 60 mL of  $\frac{M}{10}$  sulphuric acid. The unreacted acid required 20 ml of  $\frac{M}{10}$  sodium hydroxide for complete neutralization. The percentage of nitrogen in the compound is:

- (1) 3% (3) 5%  
 (2) 6% (4) 10%

71. The equivalent conductance of NaCl at concentration C and at infinite dilution are  $\lambda_C$  and  $\lambda_\infty$ , respectively. The correct relationship between  $\lambda_C$  and  $\lambda_\infty$  is given as: (where the constant B is positive)

- (1)  $\lambda_C = \lambda_\infty - (B) \sqrt{C}$  (2)  $\lambda_C = \lambda_\infty + (B) \sqrt{C}$   
 (3)  $\lambda_C = \lambda_\infty + (B)C$  (4)  $\lambda_C = \lambda_\infty - (B)C$

\*72. For the reaction,  $SO_{2(g)} + \frac{1}{2}O_{2(g)} \rightleftharpoons SO_{3(g)}$ , if  $K_P = K_C(RT)^x$  where the symbols have usual meaning then the value of x is: (assuming ideality)

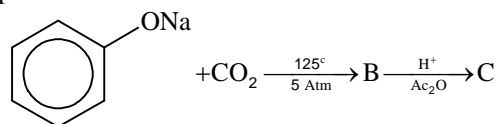
- (1)  $\frac{1}{2}$  (2) 1  
 (3) -1 (4)  $-\frac{1}{2}$

73. In the reaction,  
 $CH_3COOH \xrightarrow{LiAlH_4} A \xrightarrow{PCl_5} B \xrightarrow{Alc.KOH} C$ ,

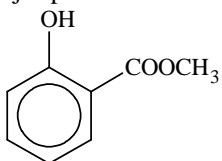
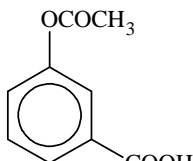
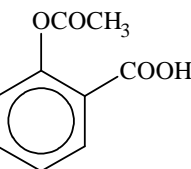
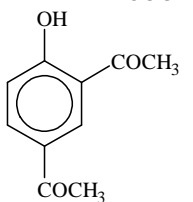
the product C is:

- (1) Ethylene (2) Acetyl chloride  
 (3) Acetaldehyde (4) Acetylene

74. Sodium phenoxide when heated with  $CO_2$  under pressure at  $125^\circ C$  yields a product which on acetylation produces C.



The major product C would be:

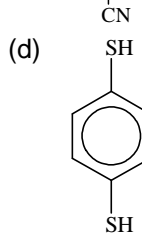
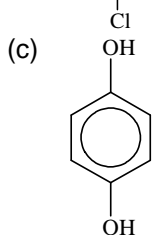
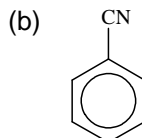
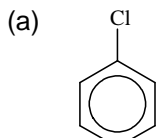
- (1)  (2)   
 (3)  (4) 

75. On heating an aliphatic primary amine with chloroform and ethanolic potassium hydroxide, the organic compound formed is:
- (1) an alkyl cyanide (2) an alkyl isocyanide  
(3) an alkanol (4) an alkanediol

76. The correct statement for the molecule,  $\text{CsI}_3$  is:
- (1) it contains  $\text{Cs}^{3+}$  and  $\text{I}^-$  ions. (2) it contains  $\text{Cs}^+$ ,  $\text{I}^-$  and lattice  $\text{I}_2$  molecule.  
(3) it is a covalent molecule. (4) it contains  $\text{Cs}^+$  and  $\text{I}_3^-$  ions.

- \*77. The equation which is balanced and represents the correct product(s) is:
- (1)  $[\text{Mg}(\text{H}_2\text{O})_6]^{2+} + (\text{EDTA})^{4-} \xrightarrow{\text{excess NaOH}} [\text{Mg}(\text{EDTA})]^{2-} + 6\text{H}_2\text{O}$   
(2)  $\text{CuSO}_4 + 4\text{KCN} \longrightarrow \text{K}_2[\text{Cu}(\text{CN})_4] + \text{K}_2\text{SO}_4$   
(3)  $\text{Li}_2\text{O} + 2\text{KCl} \longrightarrow 2\text{LiCl} + \text{K}_2\text{O}$   
(4)  $[\text{CoCl}(\text{NH}_3)_5]^+ + 5\text{H}^+ \longrightarrow \text{Co}^{2+} + 5\text{NH}_4^+ + \text{Cl}^-$

- \*78. For which of the following molecule significant  $\mu \neq 0$ ?



- (1) Only (c) (2) (c) and (d)  
(3) Only (a) (4) (a) and (b)

- \*79. For the non – stoichiometre reaction  $2\text{A} + \text{B} \longrightarrow \text{C} + \text{D}$ , the following kinetic data were obtained in three separate experiments, all at 298 K.

Initial Concentration (A)	Initial Concentration (B)	Initial rate of formation of C ( $\text{mol L}^{-1}\text{S}^{-1}$ )
0.1 M	0.1 M	$1.2 \times 10^{-3}$
0.1 M	0.2 M	$1.2 \times 10^{-3}$
0.2 M	0.1 M	$2.4 \times 10^{-3}$

The rate law for the formation of C is:

- (1)  $\frac{dc}{dt} = k[\text{A}][\text{B}]^2$  (2)  $\frac{dc}{dt} = k[\text{A}]$   
(3)  $\frac{dc}{dt} = k[\text{A}][\text{B}]$  (4)  $\frac{dc}{dt} = k[\text{A}]^2[\text{B}]$

80. Which series of reactions correctly represents chemical reactions related to iron and its compound?

- (1)  $\text{Fe} \xrightarrow{\text{Cl}_2, \text{heat}} \text{FeCl}_3 \xrightarrow{\text{heat, air}} \text{FeCl}_2 \xrightarrow{\text{Zn}} \text{Fe}$   
(2)  $\text{Fe} \xrightarrow{\text{O}_2, \text{heat}} \text{Fe}_3\text{O}_4 \xrightarrow{\text{CO}, 600^\circ\text{C}} \text{FeO} \xrightarrow{\text{CO}, 700^\circ\text{C}} \text{Fe}$   
(3)  $\text{Fe} \xrightarrow{\text{dil H}_2\text{SO}_4} \text{FeSO}_4 \xrightarrow{\text{H}_2\text{SO}_4, \text{O}_2} \text{Fe}_2(\text{SO}_4)_3 \xrightarrow{\text{heat}} \text{Fe}$   
(4)  $\text{Fe} \xrightarrow{\text{O}_2, \text{heat}} \text{FeO} \xrightarrow{\text{dil H}_2\text{SO}_4} \text{FeSO}_4 \xrightarrow{\text{heat}} \text{Fe}$

81. Considering the basic strength of amines in aqueous solution, which one has the smallest  $pK_b$  value?  
 (1)  $(CH_3)_3N$  (2)  $C_6H_5NH_2$   
 (3)  $(CH_3)_2NH$  (4)  $CH_3NH_2$
82. Which one of the following bases is **not** present in DNA?  
 (1) Cytosine (2) Thymine  
 (3) Quinoline (4) Adenine
- \*83. The correct set of four quantum numbers for the valence electrons of rubidium atom ( $Z=37$ ) is:  
 (1)  $5, 1, 1, +\frac{1}{2}$  (2)  $5, 0, 1, +\frac{1}{2}$   
 (3)  $5, 0, 0, +\frac{1}{2}$  (4)  $5, 1, 0, +\frac{1}{2}$
- \*84. The major organic compound formed by the reaction of 1, 1, 1-trichloroethane with silver powder is:  
 (1) 2-Butyne (2) 2-Butene  
 (3) Acetylene (4) Ethene
85. Given below are the half-cell reactions:  
 $Mn^{2+} + 2e^- \longrightarrow Mn$ ;  $E^0 = -1.18 V$   
 $2(Mn^{3+} + e^- \longrightarrow Mn^{2+})$ ;  $E^0 = +1.51 V$   
 The  $E^0$  for  $3Mn^{2+} \longrightarrow Mn + 2Mn^{3+}$  will be:  
 (1)  $-0.33 V$ ; the reaction will not occur (2)  $-0.33 V$ ; the reaction will occur  
 (3)  $-2.69 V$ ; the reaction will not occur (4)  $-2.69 V$ ; the reaction will occur
- \*86. The ratio of masses of oxygen and nitrogen in a particular gaseous mixture is 1 : 4. The ratio of number of their molecule is:  
 (1) 1 : 8 (2) 3 : 16  
 (3) 1 : 4 (4) 7 : 32
87. Which one is classified as a condensation polymer?  
 (1) Teflon (2) Acrylonitrile  
 (3) Dacron (4) Neoprene
88. Among the following oxoacids, the correct decreasing order of acid strength is:  
 (1)  $HClO_4 > HClO_3 > HClO_2 > HOCl$  (2)  $HClO_2 > HClO_4 > HClO_3 > HOCl$   
 (3)  $HOCl > HClO_2 > HClO_3 > HClO_4$  (4)  $HClO_4 > HOCl > HClO_2 > HClO_3$
- \*89. For complete combustion of ethanol,  $C_2H_5OH(\ell) + 3O_2(g) \longrightarrow 2CO_2(g) + 3H_2O(\ell)$ , the amount of heat produced as measured in bomb calorimeter, is  $1364.47 \text{ kJ mol}^{-1}$  at  $25^\circ\text{C}$ . Assuming ideality the Enthalpy of combustion,  $\Delta_c H$ , for the reaction will be: ( $R = 8.314 \text{ kJ mol}^{-1}$ )  
 (1)  $-1460.50 \text{ kJ mol}^{-1}$  (2)  $-1350.50 \text{ kJ mol}^{-1}$   
 (3)  $-1366.95 \text{ kJ mol}^{-1}$  (4)  $-1361.95 \text{ kJ mol}^{-1}$
90. The most suitable reagent for the conversion of  $R-CH_2-OH \longrightarrow R-CHO$  is:  
 (1)  $CrO_3$  (2) PCC (Pyridinium Chlorochromate)  
 (3)  $KMnO_4$  (4)  $K_2Cr_2O_7$

# JEE(MAIN)-2014

## ANSWERS

### PART A – PHYSICS

1.	3	2.	4	3.	1	4.	3
5.	3	6.	2	7.	3	8.	4
9.	2	10.	1	11.	2	12.	1
13.	3	14.	1	15.	4	16.	4
17.	2	18.	1	19.	4	20.	1
21.	1	22.	1	23.	4	24.	1
25.	4	26.	3	27.	1	28.	None
29.	2	30.	None				

### PART B – MATHEMATICS

31.	1	32.	4	33.	1	34.	4
35.	2	36.	4	37.	4	38.	1
39.	2	40.	2	41.	2	42.	4
43.	3	44.	4	45.	4	46.	3
47.	4	48.	1	49.	4	50.	1
51.	3	52.	2	53.	4	54.	4
55.	3	56.	4	57.	3	58.	1
59.	1	60.	3				

### PART C – CHEMISTRY

61.	3	62.	4	63.	4	64.	3
65.	1	66.	3	67.	2	68.	4
69.	4	70.	4	71.	1	72.	4
73.	1	74.	3	75.	2	76.	4
77.	4	78.	2	79.	2	80.	2
81.	3	82.	3	83.	3	84.	1
85.	3	86.	4	87.	3	88.	1
89.	3	90.	2				

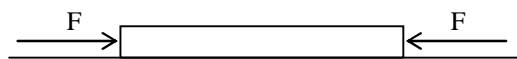
## HINTS AND SOLUTIONS

### PART A – PHYSICS

1.  $0.10 \times 1.1 \times 10^{-5} \times 100 = \frac{F}{2 \times 10^{11}} \times 0.10$

$$\therefore \frac{F}{A} = \text{Pressure} = 1.1 \times 10^{-5} \times 100 \times 2 \times 10^{11}$$

$$= 2.2 \times 10^8 \text{ Pa}$$

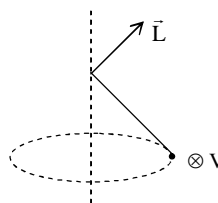


2.  $P = \frac{\text{Work Done}}{\text{Time}} = \frac{\int F dx}{t} = \frac{\int I/bB \cdot dx}{t}$

$$= \frac{\int_0^2 (10)(3)(3 \times 10^{-4} e^{-0.2x}) dx}{5 \times 10^{-3}}$$

$$= \frac{9 \times 10^{-3} \left[ \frac{e^{-0.2x}}{-0.2} \right]_0^2}{5 \times 10^{-3}} = 9 [1 - e^{-0.4}] = 2.97 \text{ W}$$

3.  $\vec{L}$  changes in direction not in magnitude



4.  $5 = e^{\frac{1000V}{T}} - 1$

$$\Rightarrow e^{\frac{1000V}{T}} = 6 \quad \dots(1)$$

Again,  $I = e^{\frac{1000V}{T}} - 1$

$$\frac{dI}{dV} = e^{\frac{1000V}{T}} \frac{1000}{T}$$

$$dI = \frac{1000}{T} e^{\frac{1000V}{T}} dV$$

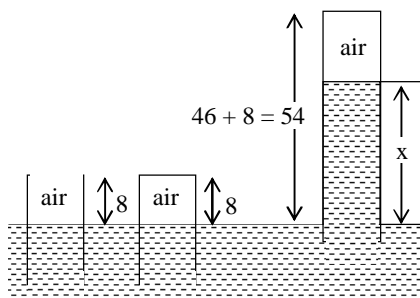
Using (1)

$$\Delta I = \frac{1000}{T} \times 6 \times 0.01 = \frac{60}{T} = \frac{60}{300} = 0.2 \text{ mA}$$

5.  $(76)(8) = (54 - x)(76 - x)$

$$x = 38 \text{ cm}$$

$$\text{Length of air column} = 54 - 38 = 16 \text{ cm}$$





6. Infrared waves → To treat muscular strain  
 radio waves → for broadcasting  
 X-rays → To detect fracture of bones  
 Ultraviolet rays → Absorbed by the ozone layer of the atmosphere;

7. By formula of electric field between the plates of a capacitor  $E = \frac{\sigma}{K\epsilon_0}$

$$\begin{aligned} \Rightarrow \sigma &= EK\epsilon_0 = 3 \times 10^4 \times 2.2 \times 8.85 \times 10^{-12} \\ &= 6.6 \times 8.85 \times 10^{-8} \\ &= 5.841 \times 10^{-7} \\ &\cong 6 \times 10^{-7} \text{ C/m}^2 \end{aligned}$$

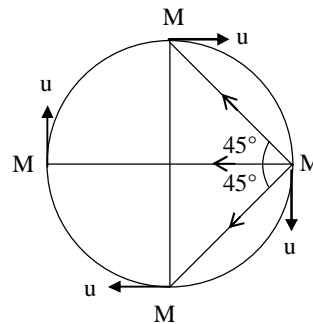
8. Least count of vernier calliper is  $\frac{1}{10} \text{ mm} = 0.1 \text{ mm} = 0.01 \text{ cm}$

9. Net force on any one particle

$$\begin{aligned} &= \frac{GM^2}{(2R)^2} + \frac{GM^2}{(R\sqrt{2})^2} \cos 45^\circ + \frac{GM^2}{(R\sqrt{2})^2} \cos 45^\circ \\ &= \frac{GM^2}{R^2} \left[ \frac{1}{4} + \frac{1}{\sqrt{2}} \right] \end{aligned}$$

This force will be equal to centripetal force so

$$\begin{aligned} \frac{Mu^2}{R} &= \frac{GM^2}{R^2} \left[ \frac{1+2\sqrt{2}}{4} \right] \\ u &= \sqrt{\frac{GM}{4R} [1+2\sqrt{2}]} = \frac{1}{2} \sqrt{\frac{GM}{R} (2\sqrt{2}+1)} \end{aligned}$$



Item	No.	Power
40 W bulb	15	600 Watt
100 W bulb	5	500 Watt
80 W fan	5	400 Watt
1000 W heater	1	1000 Watt

Total Wattage = 2500 Watt

So current capacity  $i = \frac{P}{V} = \frac{2500}{220} = \frac{125}{11} = 11.36 \cong 12 \text{ Amp.}$

11.  $A(1 - \cos \omega\tau) = a$   
 $A(1 - \cos 2\omega\tau) = 3a$   
 $\cos \omega\tau = \left(1 - \frac{a}{A}\right)$   
 $\cos 2\omega\tau = \left(1 - \frac{3a}{A}\right)$   
 $2\left(1 - \frac{a}{A}\right)^2 - 1 = 1 - \frac{3a}{A}$

Solving the equation

$$\frac{a}{A} = \frac{1}{2}$$

$$A = 2a$$

$$\cos \omega\tau = \frac{1}{2}$$

$$T = 6\tau$$

12.  $\mu_0 H = \mu_0 ni$

$$3 \times 10^3 = \frac{100}{0.1} \times i \Rightarrow i = 3A$$

13. By diagram

15. Since resistance and inductor are in parallel, so ratio will be 1.

16. For the mass m,  
 $mg - T = ma$   
 for the cylinder,

$$TR = mR^2 \frac{a}{R}$$

$$\Rightarrow T = ma$$

$$\Rightarrow mg = 2ma$$

$$\Rightarrow a = g/2$$

17.  $\Delta U_{AB} = nC_v(T_B - T_A) = 1 \times \frac{5R}{2}(800 - 400) = 1000 R$

$$\Delta U_{BC} = nC_v(T_C - T_B) = 1 \times \frac{5R}{2}(600 - 800) = -500 R$$

$$\Delta U_{total} = 0$$

$$\Delta U_{CA} = nC_v(T_A - T_C) = 1 \times \frac{5R}{2}(400 - 600) = -500 R$$

18. Time to reach the maximum height

$$t_1 = \frac{u}{g}$$

If  $t_2$  be the time taken to hit the ground

$$-H = ut_2 - \frac{1}{2}gt_2^2$$

But  $t_2 = nt_1$  (given)

$$\Rightarrow -H = u \frac{nu}{g} - \frac{1}{2}g \frac{n^2 u^2}{g^2}$$

$$\Rightarrow 2gH = nu^2(n - 2)$$

19.  $\frac{f_m}{f} = \frac{(\mu - 1)}{\left(\frac{\mu}{\mu_m} - 1\right)}$

$$\Rightarrow \frac{f_1}{f} = \frac{\left(\frac{3}{2} - 1\right)}{\left(\frac{3/2}{4/3} - 1\right)} = 4$$

$$\Rightarrow f_1 = 4f$$

$$\frac{f_2}{f} = \frac{\left(\frac{3}{2}-1\right)}{\left(\frac{3/2}{5/3}-1\right)} = -5$$

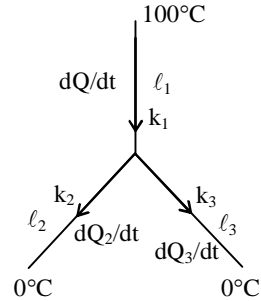
$$\Rightarrow f_2 < 0$$

20. 
$$\frac{dQ_1}{dt} = \frac{dQ_2}{dt} + \frac{dQ_3}{dt}$$

$$\Rightarrow \frac{0.92(100-T)}{46} = \frac{0.26(T-0)}{13} + \frac{0.12(T-0)}{12}$$

$$\Rightarrow T = 40^\circ\text{C}$$

$$\frac{dQ_1}{dt} = \frac{0.92 \times 4(100-40)}{40} = 4.8 \text{ cal/s}$$



21. In fundamental mode

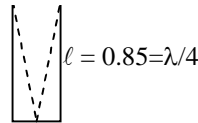
$$\frac{\lambda}{4} = 0.85$$

$$\lambda = 4 \times 0.85$$

$$f = v/\lambda = \frac{340}{4 \times 0.85}$$

$$= 100 \text{ Hz.}$$

$\therefore$  Possible frequencies = 100 Hz, 300 Hz, 500 Hz, 700 Hz, 900 Hz, 1100 Hz below 1250 Hz.



22.  $P_A = P_B$

$$P_0 + d_1 g R (\cos \alpha - \sin \alpha) = P_0 + d_2 g R (\cos \alpha + \sin \alpha)$$

$$\Rightarrow \frac{d_1}{d_2} = \frac{\cos \alpha + \sin \alpha}{\cos \alpha - \sin \alpha} = \frac{1 + \tan \alpha}{1 - \tan \alpha}$$

23. As frequency of visible light increases refractive index increases. With the increase of refractive index critical angle decreases. So that light having frequency greater than green will get total internal reflection and the light having frequency less than green will pass to air.

24. 
$$\frac{1}{\lambda} = R z^2 \left( \frac{1}{1^2} - \frac{1}{2^2} \right)$$

$$\therefore \lambda = \frac{4}{3Rz^2}$$

$$\lambda_1 = \frac{4}{3R}$$

$$\lambda_2 = \frac{4}{3R}$$

$$\lambda_3 = \frac{4}{12R}$$

$$\lambda_4 = \frac{4}{27R}$$

$$\Rightarrow \lambda_1 = \lambda_2 = 4\lambda_3 = 9\lambda_4$$

25.  $mv = qBR$

$$KE_{(\max)} = \frac{(mv)^2}{2m} = 0.8\text{eV}$$

$$h\nu = 13.6 \left[ \frac{1}{4} - \frac{1}{9} \right]$$

$$\begin{aligned} \therefore W &= h\nu - KE_{(\max)} \\ &= 13.6 \frac{5}{36} - 0.8 = 1.1\text{eV} \end{aligned}$$

26.  $mg \sin \theta = \mu mg \cos \theta$   
 $\tan \theta = \mu$

$$\frac{dy}{dx} = \tan \theta = \mu = \frac{1}{2}$$

$$\frac{x^2}{2} = \frac{1}{2}, \quad x = \pm 1$$

$$y = \frac{1}{6}\text{m.}$$

27.  $F = ax + bx^2$   
 $dw = Fdx$

$$W = \int_0^L (ax + bx^2) dx$$

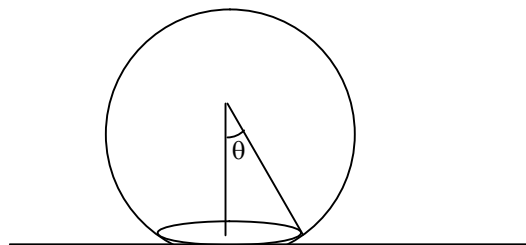
$$W = \frac{aL^2}{2} + \frac{bL^3}{3}$$

28.  $(2\pi r T) \sin \theta = \frac{4}{3} \pi R^3 \rho_w \cdot g$

$$T \times \frac{r}{R} \times 2\pi r = \frac{4}{3} \pi R^3 \rho_w g$$

$$r^2 = \frac{2}{3} \frac{R^4 \rho_w g}{T}$$

$$r = R^2 \sqrt{\frac{2\rho_w g}{3T}}$$



29.  $I_A \cos^2 30 = I_B \cos^2 60$

$$\frac{I_A}{I_B} = \frac{1}{3}$$

30.  $\vec{E} = 30x^2 \hat{i}$

$$dV = - \int E \cdot dx$$

$$\int_{V_0}^{V_A} dV = - \int_0^2 30x^2 dx$$

$$V_A - V_0 = - 80 \text{ Volt}$$

**PART B – MATHEMATICS**

31. Line is parallel to plane  
Image of (1, 3, 4) is (-3, 5, 2).

32.  $1(1 - 2x)^{18} + ax(1 - 2x)^{18} + bx^2(1 - 2x)^{18}$   
Coefficient of  $x^3$ :  $(-2)^3 {}^{18}C_3 + a(-2)^2 {}^{18}C_2 + b(-2) {}^{18}C_1 = 0$   
$$\frac{4 \times (17 \times 16)}{(3 \times 2)} - 2a \cdot \frac{17}{2} + b = 0 \quad \dots (i)$$

Coefficient of  $x^4$ :  $(-2)^4 {}^{18}C_4 + a(-2)^3 {}^{18}C_3 + b(-2)^2 {}^{18}C_2 = 0$   
$$(4 \times 20) - 2a \cdot \frac{16}{3} + b = 0 \quad \dots (ii)$$

From equation (i) and (ii), we get

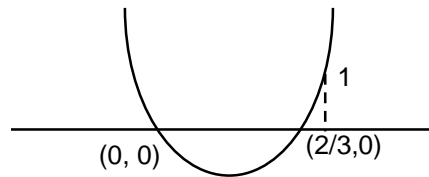
$$4\left(\frac{17 \times 8}{3} - 20\right) + 2a\left(\frac{16}{3} - \frac{17}{2}\right) = 0$$

$$4\left(\frac{17 \times 8 - 60}{3}\right) + \frac{2a(-19)}{6} = 0$$

$$a = \frac{4 \times 76 \times 6}{3 \times 2 \times 19} \Rightarrow a = 16$$

$$\Rightarrow b = \frac{2 \times 16 \times 16}{3} - 80 = \frac{272}{3}$$

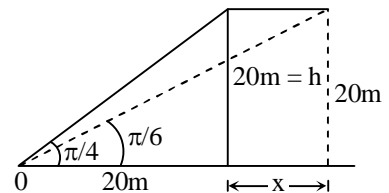
33.  $a^2 = 3t^2 - 2t$   
For non-integral solution  
 $0 < a^2 < 1$   
 $a \in (-1, 0) \cup (0, 1)$ .  
[Note: It is assumed that a real solution of given equation exists]



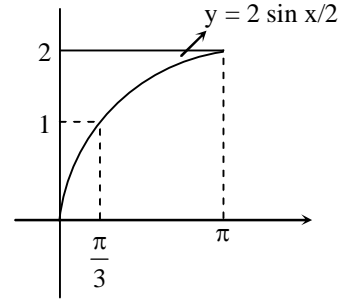
34.  $[\vec{a} \times \vec{b} \quad \vec{b} \times \vec{c} \quad \vec{c} \times \vec{a}] = [\vec{a} \quad \vec{b} \quad \vec{c}]^2$   
 $\lambda = 1$ .

35.  $\sigma^2 = \left(\frac{\sum x_i^2}{n}\right) - \bar{x}^2$   
$$\bar{x} = \frac{\sum_{r=1}^{50} 2r}{50} = 51$$
  
$$\sigma^2 = \frac{\sum_{r=1}^{50} 4r^2}{50} - (51)^2 = 833$$

36.  $\tan 30^\circ = \frac{20}{20+x} = \frac{1}{\sqrt{3}}$   
 $20+x = 20\sqrt{3}$   
 $x = 20(\sqrt{3}-1)$   
 $\Rightarrow$  Speed is  $20(\sqrt{3}-1)$  m/sec.



$$\begin{aligned}
 37. \quad I &= \int_0^{\pi} \sqrt{1 + 4\sin^2 \frac{x}{2} - 4\sin \frac{x}{2}} \, dx \\
 &= \int_0^{\pi} \left| 1 - 2\sin \frac{x}{2} \right| \, dx \\
 &= \int_0^{\pi/3} \left( 1 - 2\sin \frac{x}{2} \right) \, dx + \int_{\pi/3}^{\pi} \left( 2\sin \frac{x}{2} - 1 \right) \, dx \\
 &= \left( x + 4\cos \frac{x}{2} \right) \Big|_0^{\pi/3} + \left( -4\cos \frac{x}{2} - x \right) \Big|_{\pi/3}^{\pi} \\
 &= -\frac{\pi}{3} + 8 \cdot \frac{\sqrt{3}}{2} - 4 = 4\sqrt{3} - 4 - \frac{\pi}{3}
 \end{aligned}$$



38.

P	Q	$\sim q$	$p \leftrightarrow \sim q$	$\sim(p \leftrightarrow \sim q)$	$p \leftrightarrow q$
T	T	F	F	T	T
T	F	T	T	F	F
F	T	F	T	F	F
F	F	T	F	T	T

$$\begin{aligned}
 39. \quad B &= A^{-1}A' \Rightarrow AB = A' \\
 ABB' &= A'B' = (BA)' = (A^{-1}A'A)' = (A^{-1}AA')' = A. \\
 &\Rightarrow BB' = I.
 \end{aligned}$$

$$\begin{aligned}
 40. \quad &\int \left( 1 + x - \frac{1}{x} \right) e^{\left( \frac{x+1}{x} \right)} \, dx \\
 &= \int e^{\left( \frac{x+1}{x} \right)} \, dx + \int x \left( 1 - \frac{1}{x^2} \right) e^{\left( \frac{x+1}{x} \right)} \, dx \\
 &= \int e^{\left( \frac{x+1}{x} \right)} \, dx + x e^{\left( \frac{x+1}{x} \right)} - \int e^{\left( \frac{x+1}{x} \right)} \, dx = x e^{\left( \frac{x+1}{x} \right)} + c
 \end{aligned}$$

$$\begin{aligned}
 41. \quad &|z| \geq 2 \\
 &\left| z + \frac{1}{2} \right| \geq \left| z - \frac{1}{2} \right| \geq \left| 2 - \frac{1}{2} \right| \geq \frac{3}{2}.
 \end{aligned}$$

Hence, minimum distance between  $z$  and  $\left( -\frac{1}{2}, 0 \right)$  is  $\frac{3}{2}$ .

$$\begin{aligned}
 42. \quad &f(g(x)) = x \\
 &f'(g(x)) g'(x) = 1 \\
 &g'(x) = 1 + (g(x))^5.
 \end{aligned}$$

$$43. \quad \begin{vmatrix} 3 & 1 + \alpha + \beta & 1 + \alpha^2 + \beta^2 \\ 1 + \alpha + \beta & 1 + \alpha^2 + \beta^2 & 1 + \alpha^3 + \beta^3 \\ 1 + \alpha^2 + \beta^2 & 1 + \alpha^3 + \beta^3 & 1 + \alpha^4 + \beta^4 \end{vmatrix}$$

$$\begin{aligned}
 &= \begin{vmatrix} 1 & 1 & 1 \\ 1 & \alpha & \beta \\ 1 & \alpha^2 & \beta^2 \end{vmatrix} \begin{vmatrix} 1 & 1 & 1 \\ 1 & \alpha & \alpha^2 \\ 1 & \beta & \beta^2 \end{vmatrix} = \begin{vmatrix} 1 & 0 & 0 \\ 1 & \alpha-1 & \beta-1 \\ 1 & \alpha^2-1 & \beta^2-1 \end{vmatrix}^2 \\
 &= ((\alpha-1)(\beta^2-1) - (\beta-1)(\alpha^2-1))^2 \\
 &= (\alpha-1)^2(\beta-1)^2(\alpha-\beta)^2 \\
 &\Rightarrow k = 1
 \end{aligned}$$

$$\begin{aligned}
 44. \quad & \frac{1}{4}(\sin^4 x + \cos^4 x) - \frac{1}{6}(\sin^6 x + \cos^6 x) \\
 &= \frac{3(\sin^4 x + \cos^4 x) - 2(\sin^6 x + \cos^6 x)}{12} \\
 &= \frac{3(1 - 2\sin^2 x \cos^2 x) - 2(1 - 3\sin^2 x \cos^2 x)}{12} = \frac{1}{12}.
 \end{aligned}$$

$$\begin{aligned}
 45. \quad & \frac{1}{\alpha} + \frac{1}{\beta} = 4 \\
 & 2q = p + r \\
 & \Rightarrow -2(\alpha + \beta) = 1 + \alpha\beta \\
 & \Rightarrow -2\left(\frac{1}{\alpha} + \frac{1}{\beta}\right) = \frac{1}{\alpha\beta} + 1 \\
 & \Rightarrow \frac{1}{\alpha\beta} = -9 \\
 & \text{Equation having roots } \alpha, \beta \text{ is } 9x^2 + 4x - 1 = 0 \\
 & \alpha, \beta = \frac{-4 \pm \sqrt{16 + 36}}{2 \times 9} \\
 & |\alpha - \beta| = \frac{2\sqrt{13}}{9}.
 \end{aligned}$$

$$\begin{aligned}
 46. \quad & P(\overline{A \cup B}) = \frac{1}{6} \\
 & P(A \cup B) = \frac{5}{6}, \quad P(A) = \frac{3}{4} \\
 & P(A \cup B) = P(A) + P(B) - P(A \cap B) = \frac{5}{6} \\
 & P(B) = \frac{5}{6} - \frac{3}{4} + \frac{1}{4} = \frac{1}{3} \\
 & P(A \cap B) = P(A) \cdot P(B) \\
 & \frac{1}{4} = \frac{3}{4} \times \frac{1}{3}.
 \end{aligned}$$

$$\begin{aligned}
 47. \quad & \text{Let } h(x) = f(x) - 2g(x) \\
 & \text{As } h(0) = h(1) = 2 \\
 & \text{Hence using Rolle's theorem} \\
 & h'(c) = 0 \Rightarrow f'(c) = 2g'(c).
 \end{aligned}$$

48. 
$$\frac{dp}{dt} = \frac{p-400}{2}$$

$$\frac{dp}{p-400} = \frac{1}{2} dt$$

$$\ln |p-400| = \frac{1}{2} t + c$$
 at  $t = 0, p = 100$   
 $\ln 300 = c$   

$$\ln \left| \frac{p-400}{300} \right| = \frac{t}{2}$$

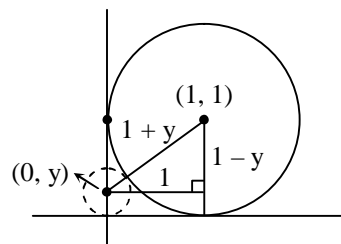
$$\Rightarrow |p-400| = 300 e^{t/2}$$

$$\Rightarrow 400 - p = 300 e^{t/2} \text{ (as } p < 400\text{)}$$

$$\Rightarrow p = 400 - 300 e^{t/2}$$

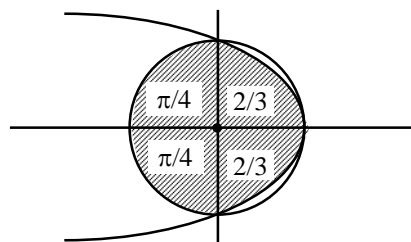
49. According to the figure  
 $(1+y)^2 = (1-y)^2 + 1 \quad (y > 0)$   

$$\Rightarrow y = \frac{1}{4}$$



50. 
$$A = \frac{1}{2} \times \pi + 2 \int_0^1 \sqrt{1-x} dx$$

$$= \frac{\pi}{2} + \frac{4}{3}$$



51. Let point of intersection is  $(h, -h)$   

$$\Rightarrow \begin{cases} 4ah - 2ah + c = 0 \\ 5bh - 2bh + d = 0 \end{cases}$$
 So,  $-\frac{c}{2a} = -\frac{d}{3b}$   
 $3bc - 2ad = 0$

52.  $S\left(\frac{13}{2}, 1\right), P(2, 2)$   
 Slope =  $-\frac{2}{9}$   
 Equation will be  $\frac{y+1}{x-1} = -\frac{2}{9}$   
 $9y + 9 + 2x - 2 = 0$   
 $2x + 9y + 7 = 0$

53. 
$$\lim_{x \rightarrow 0} \frac{\sin(\pi \cos^2 x)}{x^2}$$



$$= \lim_{x \rightarrow 0} \frac{\sin(\pi - \pi \sin^2 x)}{x^2}$$

$$= \lim_{x \rightarrow 0} \frac{\sin(\pi \sin^2 x)}{\pi \sin^2 x} \times \frac{\pi \sin^2 x}{x^2} = \pi.$$

54. Set X contains elements of the form  
 $4^n - 3n - 1 = (1 + 3)^n - 3n - 1$   
 $= 3^n + {}^n C_{n-1} 3^{n-1} + \dots + {}^n C_2 3^2$   
 $= 9(3^{n-2} + {}^n C_{n-1} 3^{n-1} + \dots + {}^n C_2)$   
 Set X has natural numbers which are multiples of 9 (not all)  
 Set Y has all multiples of 9  
 $X \cup Y = Y$

55. Let the foot of perpendicular be (h, k)  
 Equation of tangent with slope m passing through P (h, k) is

$$y = mx \pm \sqrt{6m^2 + 2}, \text{ where } m = -\frac{h}{k}.$$

$$\Rightarrow \sqrt{\frac{6h^2}{k^2} + 2} = \frac{h^2 + k^2}{k}$$

$$6h^2 + 2k^2 = (h^2 + k^2)^2$$

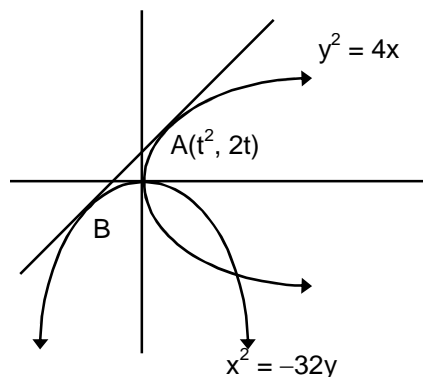
$$\text{So required locus is } 6x^2 + 2y^2 = (x^2 + y^2)^2.$$

56. Let numbers be a, ar, ar<sup>2</sup>  
 Now, 2(2ar) = a + ar<sup>2</sup> [a ≠ 0]  
 $\Rightarrow 4r = 1 + r^2$   
 $\Rightarrow r^2 - 4r + 1 = 0$   
 $\Rightarrow r = 2 \pm \sqrt{3}$   
 $r = 2 + \sqrt{3}$  (Positive value)

57.  $S = 10^9 + 2 \cdot 11^1 \cdot 10^8 + \dots + 10 \cdot 11^9$   
 $\frac{11}{10} \cdot S = 11^1 \cdot 10^8 + \dots + 9 \cdot 11^9 + 11^{10}$   
 $\Rightarrow -\frac{1}{10} S = 10^9 + 11^1 \cdot 10^8 + 11^2 \cdot 10^7 + \dots + 11^9 - 11^{10}$   
 $\Rightarrow -\frac{1}{10} S = 10^9 \left( \frac{\left(\frac{11}{10}\right)^{10} - 1}{\frac{11}{10} - 1} \right) - 11^{10} \Rightarrow -\frac{1}{10} S = 11^{10} - 10^{10} - 11^{10}$   
 $S = 10^{11}$   
 $S = 100 \cdot 10^9$   
 $\Rightarrow k = 100.$

58.  $l = -m - n$   
 $m^2 + n^2 = (m + n)^2$   
 $\Rightarrow mn = 0$   
 So possibilities are  $\left(-\frac{1}{\sqrt{2}}, \frac{1}{\sqrt{2}}, 0\right)$  or  $\left(-\frac{1}{\sqrt{2}}, 0, \frac{1}{\sqrt{2}}\right)$   
 $\Rightarrow \cos \theta = \frac{1}{2} \Rightarrow \theta = \frac{\pi}{3}.$

59. Equation of tangent at A ( $t^2, 2t$ )  
 $yt = x + t^2$  is tangent to  $x^2 + 32y = 0$  at B  
 $\Rightarrow x^2 + 32\left(\frac{x}{t} + t\right) = 0$   
 $\Rightarrow x^2 + \frac{32}{t}x + 32t = 0$   
 $\Rightarrow \left(\frac{32}{t}\right)^2 - 4(32t) = 0$   
 $\Rightarrow 32\left(\frac{32}{t^2} - 4t\right) = 0$   
 $\Rightarrow t^3 = 8 \Rightarrow t = 2.$   
 $\Rightarrow$  Slope of tangent is  $\frac{1}{t} = \frac{1}{2}.$



60.  $f'(x) = \frac{\alpha}{x} + 2\beta x + 1$   
 $\Rightarrow 2\beta x^2 + x + \alpha = 0$  has roots  $-1$  and  $2.$

### PART C – CHEMISTRY

61. NO is paramagnetic in gaseous state due to the presence of unpaired electron in its structure.

62.  $\left(P + \frac{n^2 a}{V^2}\right)(V - nb) = nRT$

For 1 mole,  $\left(P + \frac{a}{V^2}\right)(V - b) = RT$

$$PV = RT + Pb - \frac{a}{V} + \frac{ab}{V^2}$$

at low pressure, terms  $Pb$  &  $\frac{ab}{V^2}$  will be negligible as compared to  $RT.$

So,  $PV = RT - \frac{a}{V}$

$$Z = 1 - \frac{a}{RTV}$$

63. During the electrolysis of aqueous solution of s-block elements,  $H_2$  gas is obtained at cathode.

64.  $50 = \frac{1}{K} \times \frac{\ell}{A}$

$$50 = \frac{1}{1.4} \times \frac{\ell}{A}$$

$$\frac{\ell}{A} = 70 \text{ m}^{-1}$$

$$280 = \frac{1}{K} \times 70$$

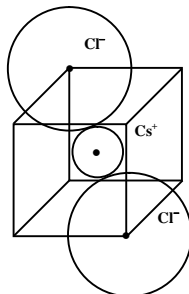
$$K = \frac{1}{4} \text{ S m}^{-1}$$

$$\Lambda_m = \frac{1}{4} \times \left( \frac{1000}{M} \right) (10^{-2} \text{ m})^3$$

$$= \frac{1}{4} \times \frac{1000}{0.5} \times 10^{-6}$$

$$= 500 \times 10^{-6} = 5 \times 10^{-4} \text{ S m}^2 \text{ mol}^{-1}$$

65. In CsCl structure,  $\text{Cs}^+$  ion is in contact with  $\text{Cl}^-$  ion at the nearest distance which is equal to  $\sqrt{3} \frac{a}{2}$



66. For  $\text{C}_2\text{H}_5\text{OH}$ ,  $\pi = 1 \times 0.5 \times \text{RT}$   
 For  $\text{KBr}$ ,  $\pi = 2 \times 0.25 \times \text{RT}$   
 For  $\text{Mg}_3(\text{PO}_4)_2$ ,  $\pi = 5 \times 0.1 \times \text{RT}$   
 For  $\text{Na}_3\text{PO}_4$ ,  $\pi = 4 \times 0.125 \times \text{RT}$   
 So, all are isotonic solutions.

67. A reducing agent loses electrons during redox reaction.  
 Hence (b, d) is correct.

68. Rate of  $\text{S}_{\text{N}}2$  reaction  $\propto \frac{1}{\text{steric over crowding in transition state}}$

69. Strong field ligands cause higher magnitude of crystal field splitting which is accompanied by the absorption of higher energy radiation.

V I B G Y O R  $\rightarrow$  decreasing energy

70. % of N =  $\frac{1.4 \times \text{milliequivalents of acid consumed}}{\text{mass of organic compound}}$

$$\text{Meq of acid consumed} = \left( 60 \times \frac{1}{10} \times 2 \right) - \left( 20 \times \frac{1}{10} \times 1 \right)$$

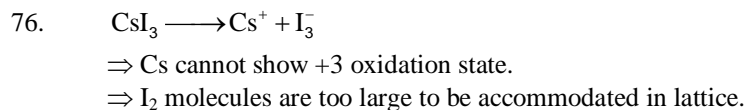
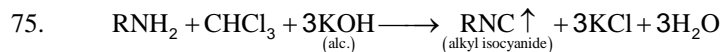
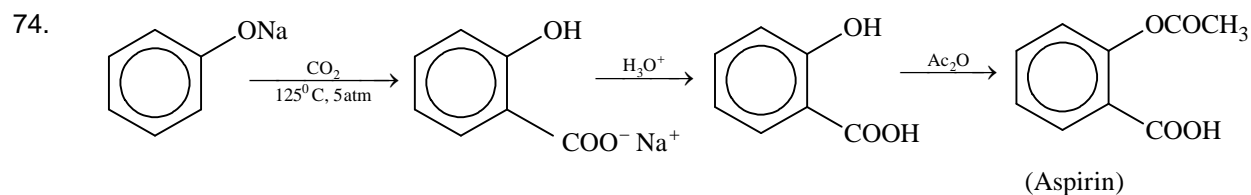
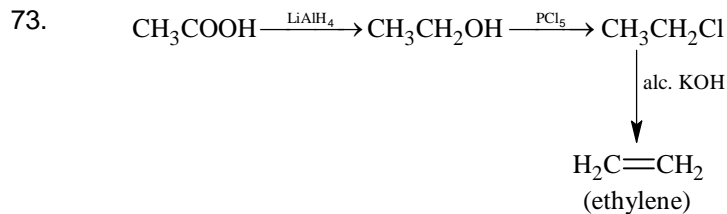
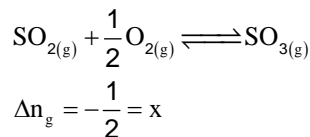
$$= 10$$

$$\therefore \% \text{ of N} = \frac{1.4 \times 10}{1.4} = 10\%$$

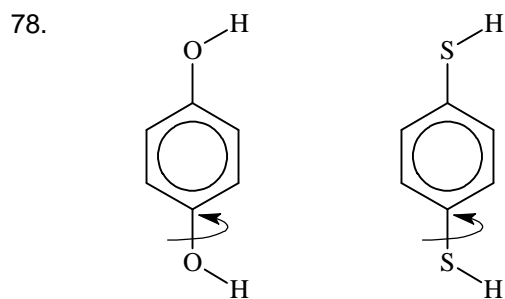
71. According to Debye Huckel's Theory for a strong electrolyte,

$$\lambda_c = \lambda_\infty - B\sqrt{C}$$

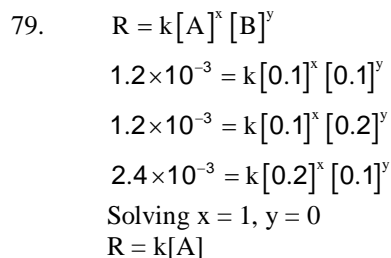
72. For reaction:



77. Equation – 1 is not balanced w.r.t. charge.  
 Equation – 2 gives  $\text{K}_3[\text{Cu}(\text{CN})_4]$  as product.  
 Equation – 3 reaction is unfavourable in the forward direction ( $\text{K}_2\text{O}$  is unstable, while  $\text{Li}_2\text{O}$  is stable).  
 Equation – 4 is correct & balanced.



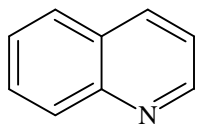
Due to infinite possible conformations in the above cases (of which only one has zero  $\mu$ ); a weighted  $\mu$  will finally exist.



80. In Eq. (1)  $\text{FeCl}_3$  cannot be reduced when heated in air.  
 In Eq. (3)  $\text{Fe}_2(\text{SO}_4)_3$  cannot convert to Fe on heating; instead oxide(s) will be formed.  
 In Eq. (4)  $\text{FeSO}_4$  cannot be converted to Fe on heating; instead oxide(s) will be formed.  
 Hence Eq. (2) is correct.

81. Aliphatic amines are more basic than aromatic amines.  
 $(\text{CH}_3)_2\text{NH} > \text{CH}_3\text{NH}_2 > (\text{CH}_3)_3\text{N}$  (among aliphatic amines in water).

82. Adenine, Thymine, Cytosine, Guanine are bases present in DNA.  
 Quinoline an aromatic compound is NOT present in DNA.

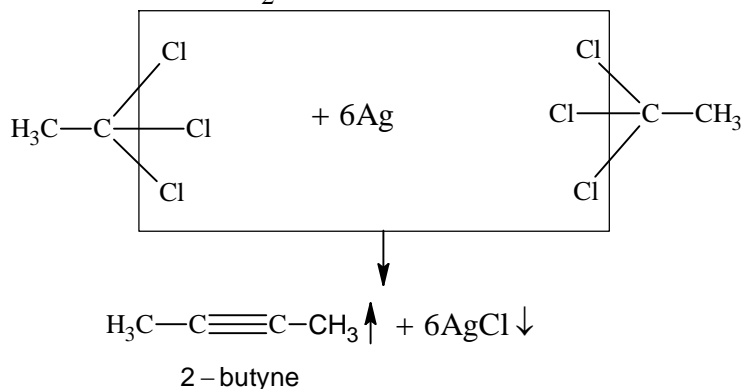


(Quinoline)

83.  ${}_{37}\text{Rb} = [\text{Kr}] 5s^1$

$$n = 5, l = 0, m = 0, s = +\frac{1}{2}$$

- 84.



85.  $\text{Mn}^{+2} + 2e^- \longrightarrow \text{Mn} \quad E^\circ = -1.18 \text{ V}$   
 $2\text{Mn}^{+2} \longrightarrow 2\text{Mn}^{+3} + 2e^- \quad E^\circ = -1.51 \text{ V}$   


---

 $3\text{Mn}^{+2} \longrightarrow \text{Mn} + 2\text{Mn}^{+3} \quad E^\circ = \text{SOP} + \text{SRP}$   
 $\quad \quad \quad = -1.18 + (-1.51)$   
 $\quad \quad \quad = -2.69 \text{ V}$

Negative EMF reflects non-spontaneous cell reaction.

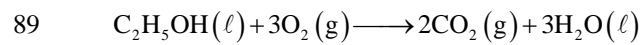
86. Moles of  $\text{O}_2 = \frac{w}{32}$

$$\text{Moles of } \text{N}_2 = \frac{4w}{28}$$

$$\frac{n_{\text{O}_2}}{n_{\text{N}_2}} = \frac{w}{32} \times \frac{28}{4w} = \frac{7}{32}$$

87. Teflon, Acrylonitrile and Neoprene are addition polymers while Dacron is a condensation polymer.

88.  $\text{HClO} < \text{HClO}_2 < \text{HClO}_3 < \text{HClO}_4$   
 Increasing acid strength due to increase in oxidation state of central atom.



$$\Delta E = -1364.47 \text{ kJ / mole}$$

$$\Delta H = ?$$

$$T = 298 \text{ K}$$

$$\Delta n_g = -1$$

$$\therefore \Delta H = \Delta E + \Delta n_g RT$$

$$\text{So, } \Delta H = -1366.95 \text{ kJ / mole}$$

